

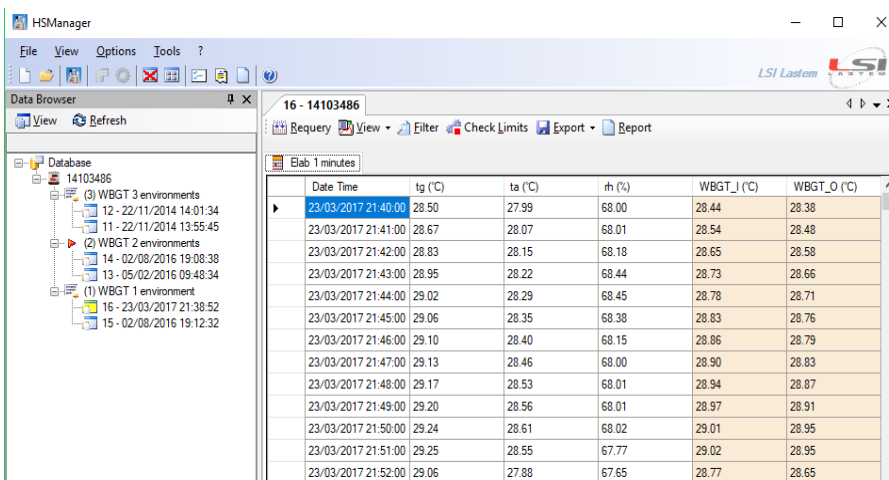
Heat Shield Manager (BSZ125, Included with Heat Shield system)

Heat Shield Manager is a program for the risk assessment of the thermal stress in working environments through the calculation of WBGT indoor & outdoor indices, according to the updated ISO7243:2017 norm. The program accompanies the Heat Shield system, from which it downloads and analyse data and created tables, graphs and reports. It manages data in compliance with the device's configuration selected.

- ▶ Data management and download of Heat Shield measurements
- ▶ Data display and statistical calculations
- ▶ Limit analysis according to subjects characteristics
- ▶ Report creation
- ▶ The program complies with ISO7243 norm updated in 2017

Main features

Data download and storage

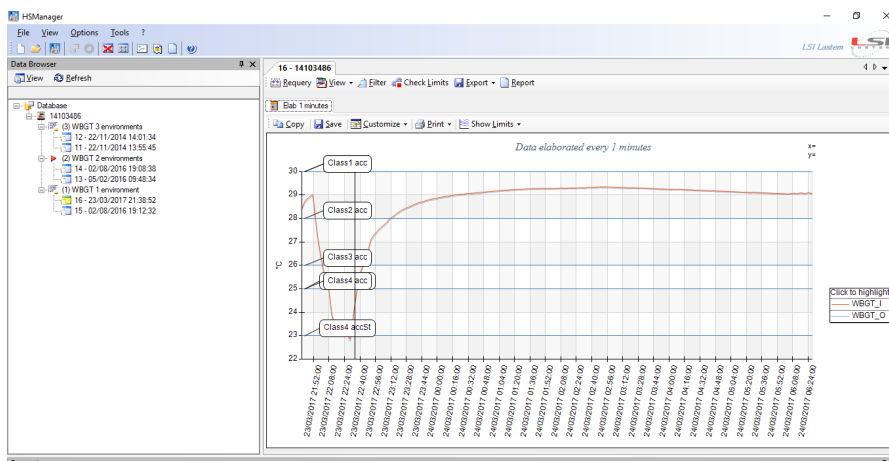


Date Time	tg (°C)	ta (°C)	rh (%)	WBGT_I (°C)	WBGT_O (°C)
23/03/2017 21:40:00	28.50	27.99	68.00	28.44	28.38
23/03/2017 21:41:00	28.67	28.07	68.01	28.54	28.48
23/03/2017 21:42:00	28.83	28.15	68.18	28.65	28.58
23/03/2017 21:43:00	28.95	28.22	68.44	28.73	28.66
23/03/2017 21:44:00	29.02	28.29	68.45	28.78	28.71
23/03/2017 21:45:00	29.06	28.35	68.38	28.83	28.76
23/03/2017 21:46:00	29.10	28.40	68.15	28.86	28.79
23/03/2017 21:47:00	29.13	28.46	68.00	28.90	28.83
23/03/2017 21:48:00	29.17	28.53	68.01	28.94	28.87
23/03/2017 21:49:00	29.20	28.56	68.01	28.97	28.91
23/03/2017 21:50:00	29.24	28.61	68.02	29.01	28.95
23/03/2017 21:51:00	29.25	28.55	67.77	29.02	28.95
23/03/2017 21:52:00	29.06	27.88	67.65	28.77	28.65

▶ *Data browser: measurements listed by device and by surveys (number, date/time of start/end, type).*

- Data download from the Heat Shield device
- Visualization of real-time values measured by the connected device
- Data browser: surveys are stored in the Access database.

Data display and analysis



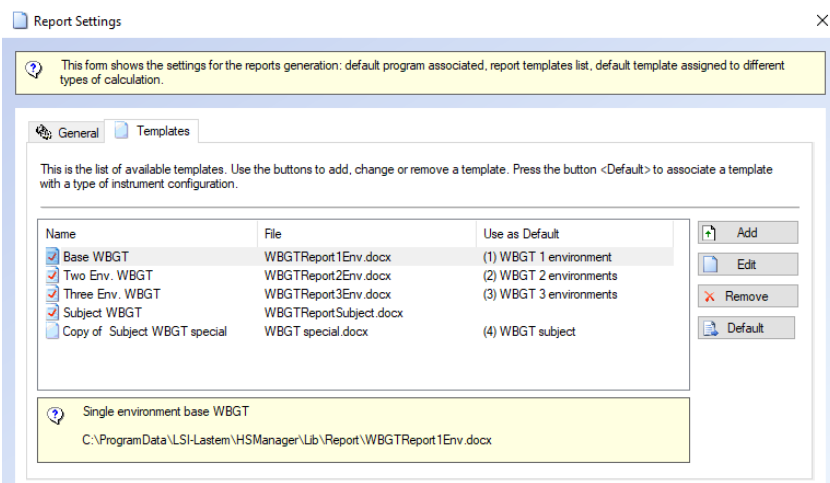
▶ *Analysis and evaluation of the WBGT index per each subject class acclimated and non-acclimated (ISO7243:2017).*

- Tabular or graphic visualization of raw environmental quantities and microclimate indices as measured by the device
- Raw data can be statistically processed by using different programmable statistical time bases. This function also allows to calculate over the whole survey, average value and min/max value with date/time of the event
- Charts of WBGT index values for each subject class according to the ISO7243:2017 standard for “acclimated and non-acclimated subjects”
- Limits and thresholds evaluation according to ISO7243:2017 and ACGIH depending on the subjects class and on their characteristics. Thresholds are verified according to ISO7243:2017 as passed or not-passed. For ACGIH standard it reports the percentage of work allowed over a period of 8 hours
- Calculation of the subject's effective WBGT_{eff} (WBGT + Clothing adjustment factor) and the reference limit WBGT_{ref}, obtained using analytical formulas based on metabolic activity. WBGT assessment over a free programmable threshold
- Analysis of PMV-PPD values (ISO7730) downloaded from the Heat Shield device (from Heat Shield version 3.0)

Export to Gidas-TEA

- Export of data to GIDAS-TEA to classify measurements and create more detailed analysis and reports
- Export of data in TXT or XML files

Reports



▶ Report of environmental measurements and of indexes in Open Office XML files (.docx).
4 customizable report templates available and possibility to create new ones.