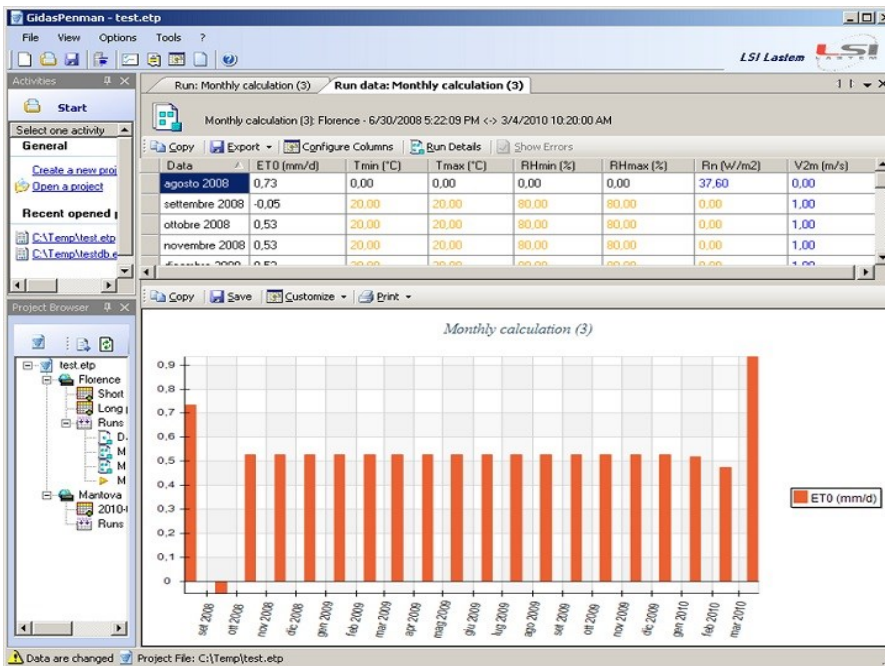


GIDAS-Penman (BSZ421)

Module to calculate the Evapotranspiration index according to the FAO Penman-Monteith equation (“Crop evapotranspiration - Guidelines for computing crop water requirements FAO Irrigation and drainage paper 56, FAO - Food and Agriculture Organization of the United Nations Roma, 1998”). Evapotranspiration is the water loss of soil and plants that turns into vapor. GIDAS-Penman software allows to calculate the daily and monthly Evapotranspiration index ET₀, that is the evapotranspiration rate from a benchmark surface. It gets the data from the SQL Server Gidas database.

- ▶ Evapotranspiration index according to the FAO Penman-Monteith equation
- ▶ Daily and monthly calculation
- ▶ Report of the results
- ▶ The daily Evapotranspiration calculation is available also on the Alpha-Log data logger

Main features



▶ It is possible to select:

- The data logger of interest
- The period of measurement (time window)
- The elaboration base (daily or monthly)

The configuration can be saved for following uses.

Parameters setup

- Configuration of one or more sites
- Selection of the required parameters: temperature, humidity, net solar radiation and wind speed
- Use of measured or estimated values

Results

- Calculation of daily and monthly evapotranspiration index ET₀
- Graphic and tabular visualization of results
- Creation of reports in Open Office XML format (ECMA-376), which are also compatible with Microsoft Office

LSI LASTEM Srl
Via Ex SP. 161 Dosso, 9
20049 Settala (MI)
Italy

Tel. +39 02 954141
Fax +39 02 95770594
Email info@lsi-lastem.com
www.lsi-lastem.com

