

X-Panel is a control panel that displays the instantaneous values from the M/R/E-Log and Alpha-Log data loggers in real time and dynamically.

The software receives data from **M/R/E-Log connected via cable or through the CommNET program**. Using the latter program allows you to use multiple independent X-Panel sessions on multiple computers on the same network.

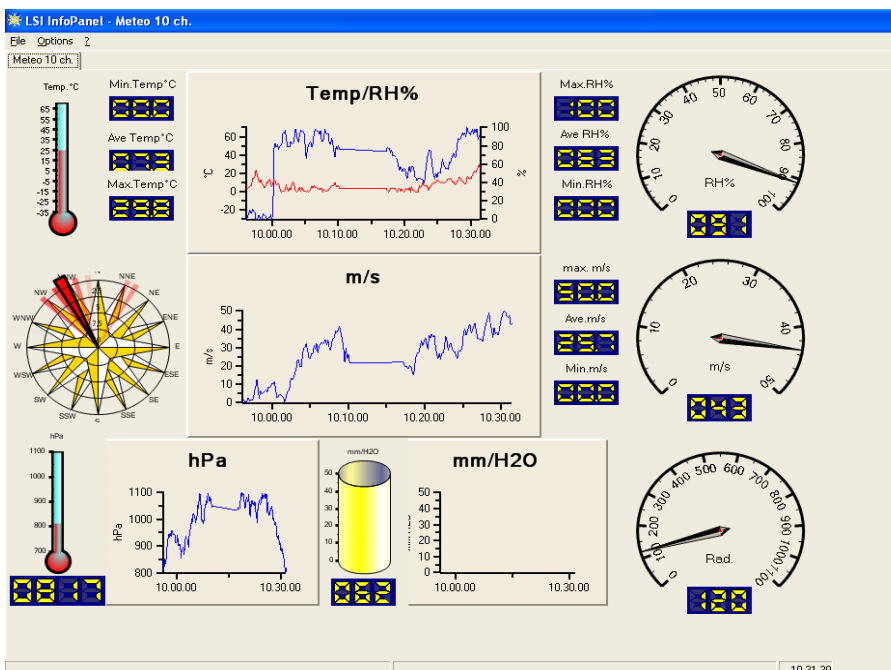
**For Alpha-Log, X-Panel takes the data from an MQTT broker server** where the data logger has sent the data.

With X-Panel, the configuration of each page can be completely customized according to the data loggers and sensors to be viewed.

- ▶ Real-time information from data logger on dynamic dashboard
- ▶ Fully programmable
- ▶ Multi-parameter and multi-station dashboard
- ▶ Data input directly from data logger or from CommNET program or from MQTT broker server

## Main features

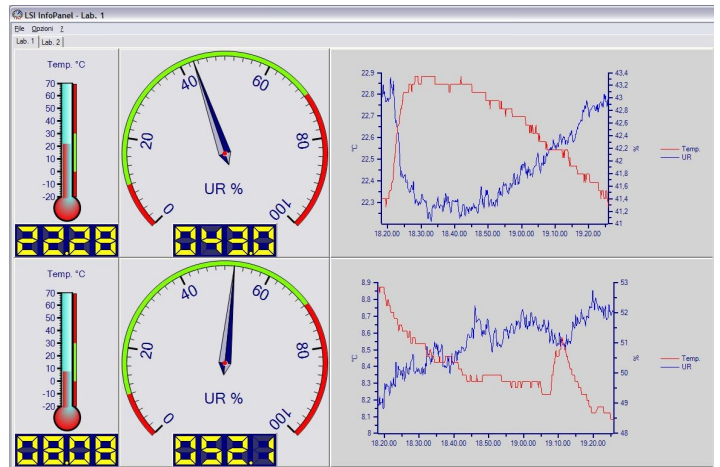
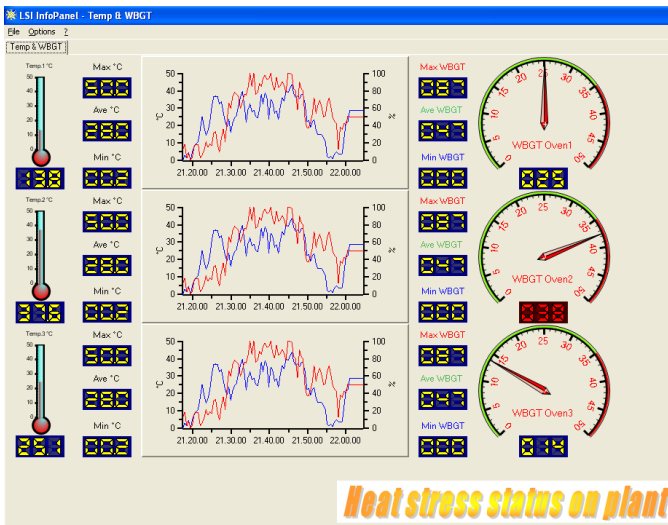
### Setup features



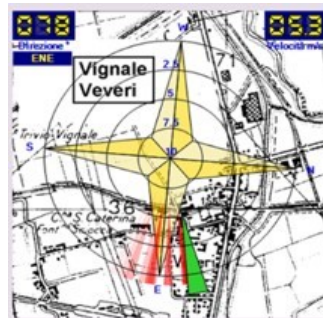
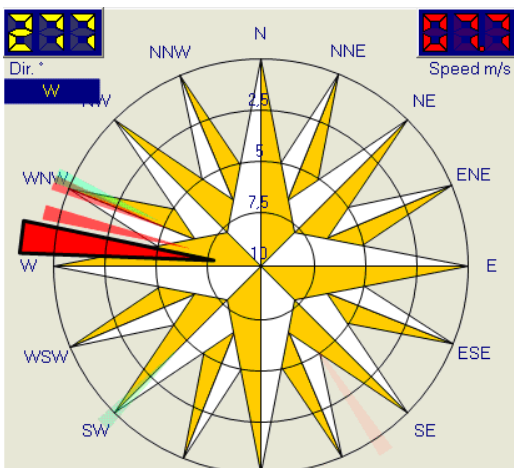
▶ *Example of a control panel, where the following dynamic objects are located:*

- Thermometer for temperature and pressure
- Single or double variable charts
- Wind rose
- Analog or digital displays with instantaneous or statistical values
- Tank for indication of levels and totals

- Setup of the data received directly from a data logger connected via RS232-RS485-USB-Ethernet, (using R/M/E-Log) or through CommNET, which is set up on a PC server; in this case, it is possible to view data coming from more data loggers, also remote
- Setup of the data reception modes from MQTT broker server (only using Alpha-Log). In that case the data logger sends the data to a MQTT broker server, where X-Panel extracts the instant values. This feature allows to get, even by remote data loggers, the fastest connectivity given by this protocol. For a faster data update, up to 1 second, Alpha-Log should be connected to Internet in real-time using 3G/4G modem or Router, WiFi or Ethernet connection
- Configuration of “dynamic elements” (digital and analogue indicators) according to the number of measurements to be displayed: position, contents of the dynamic elements for each parameter, dynamic wind rose, running charts with real-time or statistical values
- Configuration of visual and acoustic alarms (file wave) with configured thresholds
- Configuration of the wind rose. It is possible to add a background topographic map, which is useful to understand the wind direction and intensity



► Titles and images can be added on the control panel, it is also possible to configure the navigation through the various pages: manually selectable through labels or with automatic scrolling



► The wind rose is widely configurable in the number of sectors, in the setting of alarms and in the background images

## MQTT broker-server rental

LSI Lastem allows its customers to activate an MQTT service on the broker-server.

The customer who does not have their own service for the transit of data from monitoring stations through the MQTT broker-server, may request the sales / distributor to activate it.

The service is available in the form of an annual subscription.

**SWCLA0009:** FTP/MQTT service activation

**SWCLA0220:** 12 Months License MQTT service, n.1 Data Logger

(see **MW9006-ENG-FTP-MQTT services**)

**LSI LASTEM** Srl  
Via Ex SP. 161 Dosso, 9  
20090 Settala (MI)  
Italy

**Tel.** +39 02 954141  
**Fax** +39 02 95770594  
**Email** info@lsi-lastem.com  
**www.lsi-lastem.com**