

GIDAS-Viewer (BSZ311)

GIDAS Viewer is the LSI LASTEM program for visualization of historical data downloaded from data loggers (through 3DOM, CommNET and Alpha-Log CommNET).

The program uses the data collected in the SQL GIDAS database and produces tables and graphs, both from raw and elaborated data, according to different time bases selectable by the user.

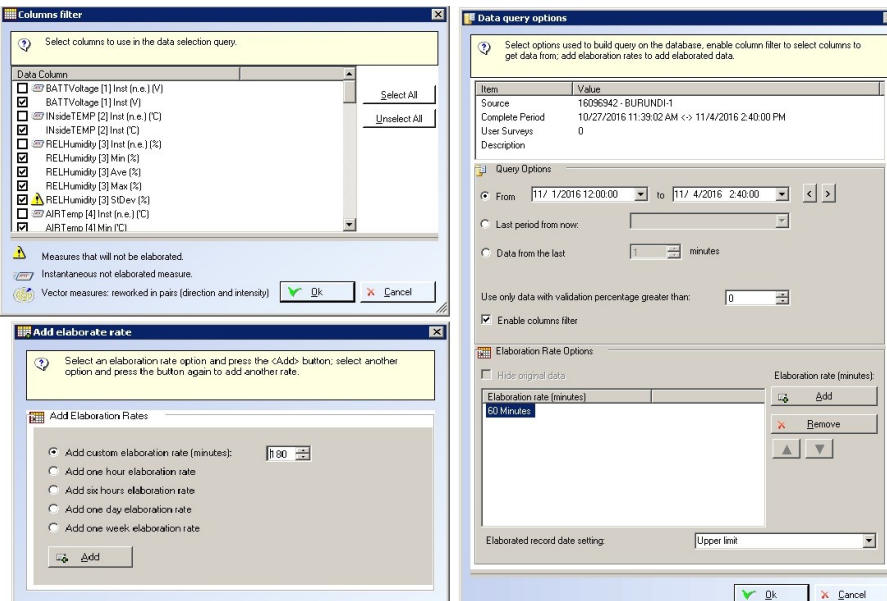
The elaborated data can be exported as an Excel file (* CSV) or a text file (* TXT), the graphics can be saved as images (* JPG).

The program permits to save data display filters (Views), with the possibility of including data from more than one station at the same time, using the same settings without having to re-edit them. The visualization can include one or more quantities acquired by one or more devices in order to get aggregate data from different data loggers.

- ▶ Display and extraction of data stored in the SQL GIDAS database
- ▶ Data processing on different time bases
- ▶ Table and charts creation
- ▶ Wind rose creation
- ▶ Including Lite version for fast application
- ▶ Set up queries to manage Views of selected data

Main Features

Data selection



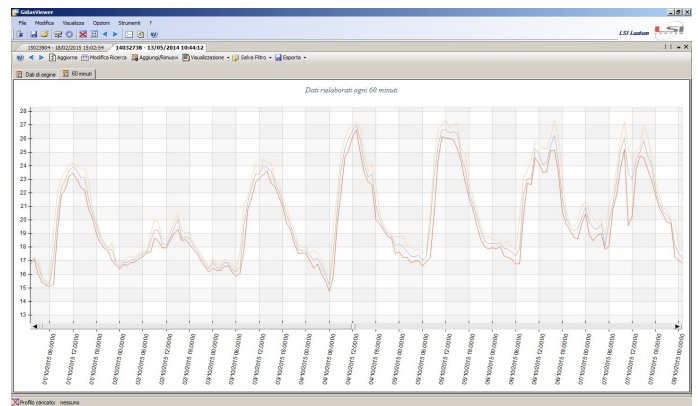
▶ GIDAS Viewer permits to select:

- The data logger of interest
- The measured variables
- The measurement period (time window) or the latest available data
- The basis of elaboration (none, 1h, 6h, 1gg, 1sett, customizable)

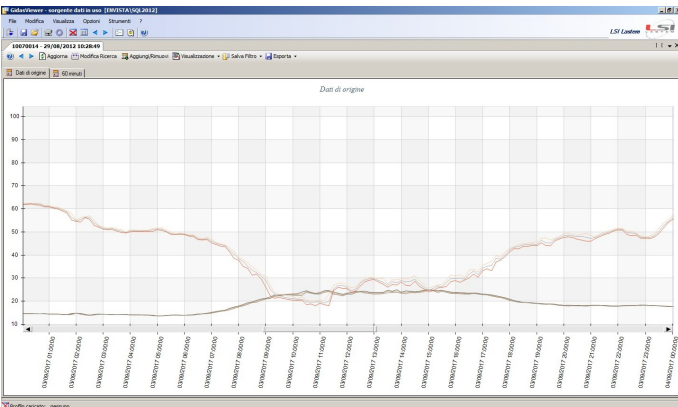
Data view

- Multi-variable and multi-station tables and graphs. Useful graphic functions (zoom, scroll)
- Exporting data to text files and Excel files
- Exporting charts as images
- Calculation and visualization of the Wind Rose
- Calculation and display of the Weibull curve to support applications in the field of wind energy

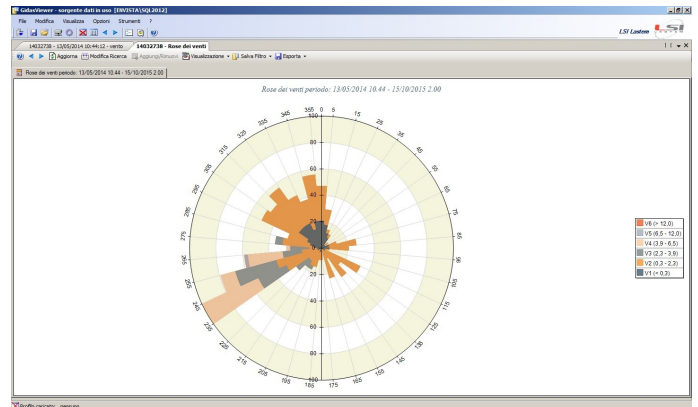
▶ **Tabular data display: statistical data (min, average, max, std. dev.) of all the measured quantities and possibility to select the data to be displayed using a filter**



▶ **The program permits to view statistical temporal trends of single quantities (see image) or groups**



▶ **The program permits to view statistical temporal trends of single quantities or groups (see image)**



▶ **Possibility to create the Wind Rose graph, starting from selectable wind channels (both measured and derived). The number of sectors is programmable**

GIDAS-Lite module

Selected Instrument - 15105121

Property	Value
Factory Serial Number	15105121
User Serial Number	15105121
Description	DOW P9
Firmware Version	02.41.00
Compatible Configurations	02.00 - 02.99
Factory model:	ELog 305
Last Saved Data:	Never saved

▶ **With GIDAS Viewer, GIDAS-Lite is also provided. It is a module that allows the simple and quick use of some features of the main program. It includes two sections:**

- **Download of data to be imported into the GIDAS database (if the data logger is connected via RS232-RS485-USB-Ethernet) without the use of 3DOM or CommNET**
- **Selection of data for simplified visualization**