

# Alpha-Log CommNET (BSZ309)

Service application that permits to download data automatically from the FTP servers where the Alpha-Log data logger delivered them.

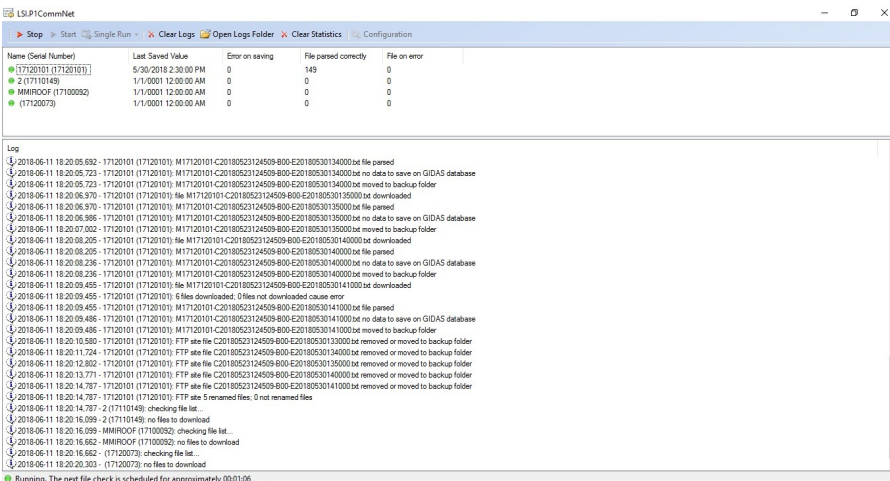
Once received, it is possible to manage the data for different purposes:

- Use the data with LSI LASTEM programs that support the SQL-GIDAS database
- Use the data in the SQL database through third-party applications created for the purpose
- Backup of the ASCII data from an FTP area to local or shared folders

- ▶ Saving of Alpha-Log data on SQL-GIDAS database to be used by LSI LASTEM applications
- ▶ Once present in the database, the data are easily managed via GIDAS-Viewer
- ▶ Saving data on SQL database on local or shared folder (visible on local or remote network)

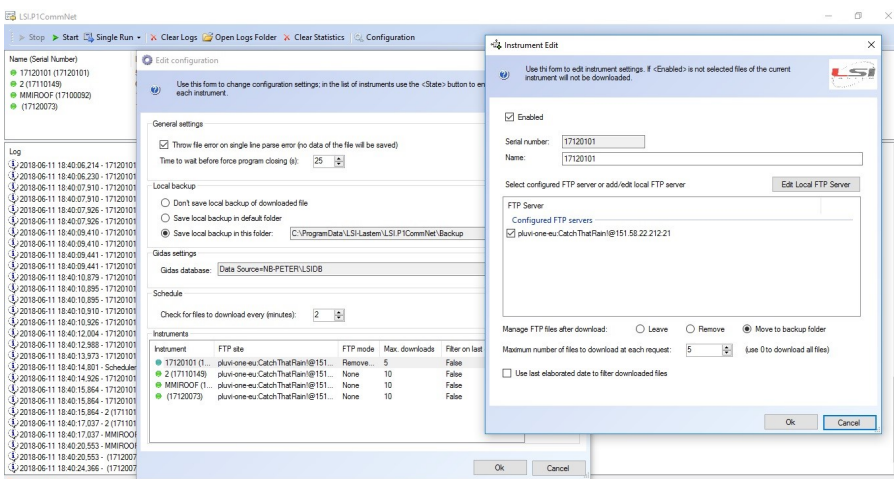
## Main features

### Data download from remote FTP area



- ▶ Alpha-Log CommNET automatically interrogates one or more FTP areas where the stations have sent the data. The program records its activity on a daily log.

### File backup from the FTP server



- ▶ The program has a simple and effective setup mode.

The program can save ASCII files, downloaded from the server, to a local or shared backup folder.

Alpha-Log CommNET can delete files from the server or move them to its backup folder.

## Space rental on FTP server

LSI Lastem allows its customers to activate a data repository service on a web space with access via FTP protocol.

The customer who does not have its own server to direct the arrival of data from monitoring stations via FTP protocol may ask the salesperson / distributor to activate it.

The service is available in the form of an annual subscription.

**SWCLA0009:** FTP/MQTT service activation

**SWCLA0120:** 12 Months License FTP service, 1 GB

**SWCLA0121:** 12 Months License FTP service, 5 GB

**SWCLA0122:** 12 Months License FTP service, 10 GB

(see *MW9006-ENG-15-FTP-MQTT services*)