

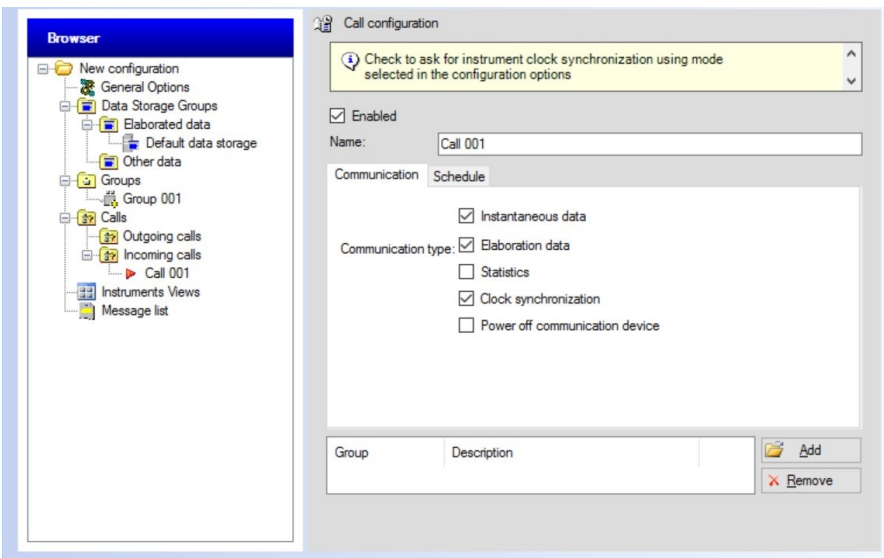
# CommNET (BSZ306.2)

Automatic download and saving of data in the SQL GIDAS database on a PC (or on a Windows Server) or as text files. CommNet can simultaneously manage different communication devices and protocols, including serial COM, PSTN, GPRS, TCP / IP, VHF / UHF radio. The program consists of two modules, one for configuration and one for automatic data download. CommNET can be installed on a server, the generated SQL database and the programs that use it can run on other PCs connected to each other.

- ▶ Automatic data communication via GPRS, Radio, TCP/IP, RS232-USB from data logger to central PC
- ▶ Data storing of realtime and elaborated values in Gidas db or ASCII format
- ▶ Monitoring of communications activities and generation of a log file

## Main Features

### Configuration module

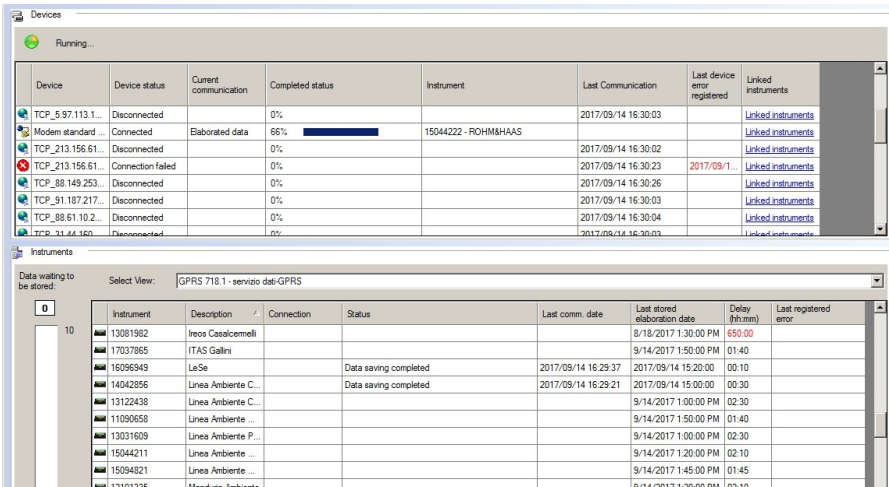


▶ The CommNET configuration page is divided into 2 sections:

- Browser: list of the programmed calls for each station or homogeneous groups of stations
- Call configuration: actions to be performed are listed for each call

- Simultaneous use of several communication devices (radio VHF/UHF, GPRS, LAN/WAN, USB, RS232/485 cable).
- Automatic calls to one data logger or groups: choice of the communication device, start date/time and recurrences of the call
- Configuration of the file format: customizable text file format, SQL Server GIDAS database file and binary file
- Configuration of the data type: real-time or historical data. Real-time data can be used by LSI LASTEM's X-Panel program or by other applications that use text files
- Automatic synchronization of data logger's clock
- Switch-off of communication devices after each call
- Save of configuration settings

## Utility operations



Device	Device status	Current communication	Completed status	Instrument	Last Communication	Last device error registered	Linked instruments
TCP_5_97.113.1...	Disconnected		0%		2017/09/14 16:30:03		<a href="#">Linked instruments</a>
Modem standard...	Connected	Elaborated data	66%	15044222 - ROHMHAAAS			
TCP_213.156.61	Disconnected		0%		2017/09/14 16:30:02		<a href="#">Linked instruments</a>
TCP_213.156.61	Connection failed		0%		2017/09/14 16:30:23	2017/09/14 16:30:23	<a href="#">Linked instruments</a>
TCP_88.149.253	Disconnected		0%		2017/09/14 16:30:26		<a href="#">Linked instruments</a>
TCP_91.187.217	Disconnected		0%		2017/09/14 16:30:03		<a href="#">Linked instruments</a>
TCP_88.61.10.2	Disconnected		0%		2017/09/14 16:30:04		<a href="#">Linked instruments</a>
TCP_21.44.160	Disconnected		0%		2017/09/14 16:30:03		<a href="#">Linked instruments</a>

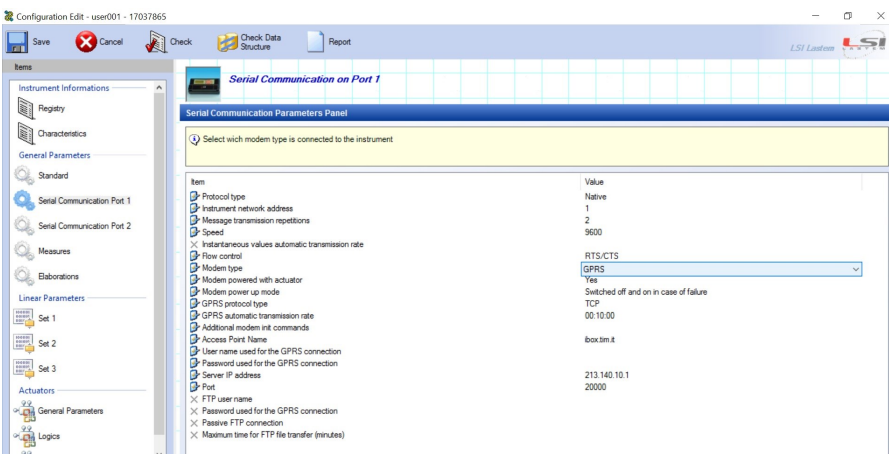
Instrument	Description	Connection	Status	Last comm. date	Last stored elaboration date	Delay (h:mm)	Last registered error
13081982	Ireos Casalcerelli				8/18/2017 1:30:00 PM	65:00	
17037865	ITAS Gallini				9/14/2017 1:50:00 PM	01:40	
16096949	LeSe	Data saving completed		2017/09/14 16:29:37	2017/09/14 15:20:00	00:10	
14042856	Linea Ambiente C...	Data saving completed		2017/09/14 16:29:21	2017/09/14 15:00:00	00:30	
13122438	Linea Ambiente C...				9/14/2017 1:00:00 PM	02:30	
11090558	Linea Ambiente ...				9/14/2017 1:50:00 PM	01:40	
13031609	Linea Ambiente P...				9/14/2017 1:00:00 PM	02:30	
15044211	Linea Ambiente ...				9/14/2017 1:20:00 PM	02:10	
15094821	Linea Ambiente ...				9/14/2017 1:45:00 PM	01:45	
15191936	Modem standard...				8/18/2017 1:30:00 PM	03:10	

▶ Control panel of the active communications of each data logger in real-time. Various details can be viewed for each acquirer:

- IP / serial number / name of the instrument
- Communication status
- Communication completion status
- Date / time of the last communication
- Presence of errors
- Delays in communications

- Automatic reboot of the program in case of computer restart
- Communication log file
- Manual calls

## GPRS module

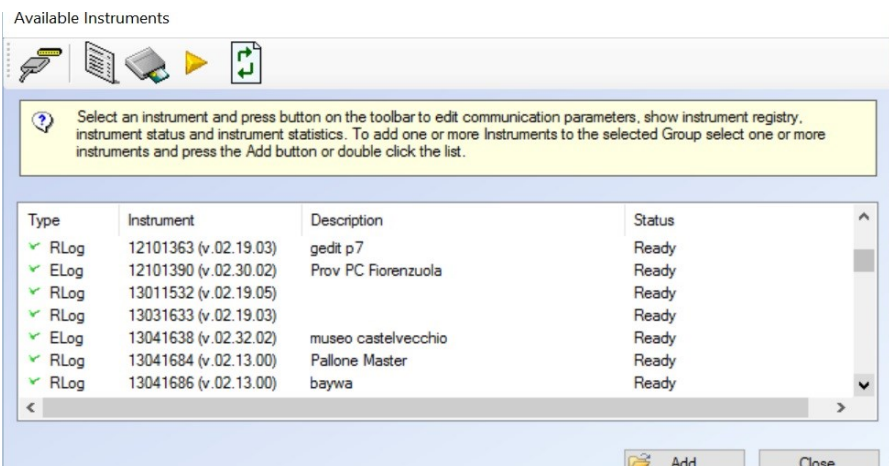


Item	Value
Protocol type	Native
Instrument network address	1
Message transmission repetitions	2
Speed	9600
Instantaneous values automatic transmission rate	
Flow control	RTS/CTS
Modem type	GPRS
Modem powered with actuator	Yes
Modem power up mode	Switched off and on in case of failure
GPRS protocol type	00:10:00
GPRS automatic transmission rate	
Additional modem init commands	
Access Point Name	box.tn.it
User name used for the GPRS connection	
Password used for the GPRS connection	
Server IP address	213.140.10.1
Port	20000
FTP user name	
Password used for the GPRS connection	
Passive FTP connection	
Maximum time for FTP file transfer (minutes)	

▶ Configuration of GPRS functions, possibility to set the parameters for GPRS communication ("push mode"):

- Protocol type
- Data transmission rate
- Name of the access point
- SIM Username and Password
- IP address (public and static)

## Setup on server



Type	Instrument	Description	Status
✓ RLog	12101363 (v.02.19.03)	gedit p7	Ready
✓ ELog	12101390 (v.02.30.02)	Prov FC Fiorenzuola	Ready
✓ RLog	13011532 (v.02.19.05)		Ready
✓ RLog	13031633 (v.02.19.03)		Ready
✓ ELog	13041638 (v.02.32.02)	museo castelvechio	Ready
✓ RLog	13041684 (v.02.13.00)	Pallone Master	Ready
✓ RLog	13041686 (v.02.13.00)	baywa	Ready

▶ It is possible to store data on SQL Gidas database installed on a server or on a PC connected to it (via LAN / WAN / VPN). Applications that use this database can run on remote PCs connected to the server where the database is located.

LSI LASTEM Srl  
Via Ex SP. 161 Dosso, 9  
20049 Settala (MI)  
Italy

Tel. +39 02 954141  
Fax +39 02 95770594  
Email info@lsi-lastem.com  
www.lsi-lastem.com

