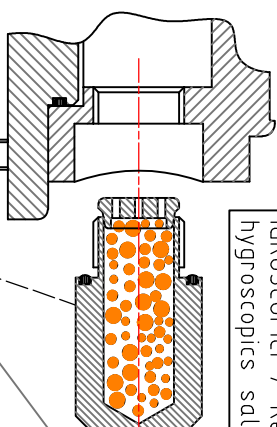


RADIOMETRO GLOBALE A TERMOPILA
CAMPO 300..3000 nm; 0..1500 W/m²

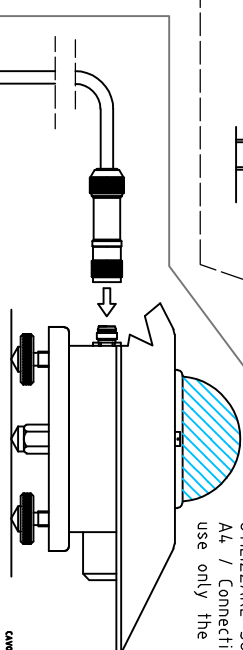
THERMOPILE GLOBAL PYRANOMETER
RANGE 300..3000 nm; 0..1500 W/m²

CARTUCCIA RIMUOVIBILE CON SALI
IGROSCOPICI / Removable
hygroscopic salts cartridge

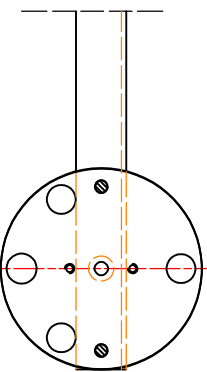
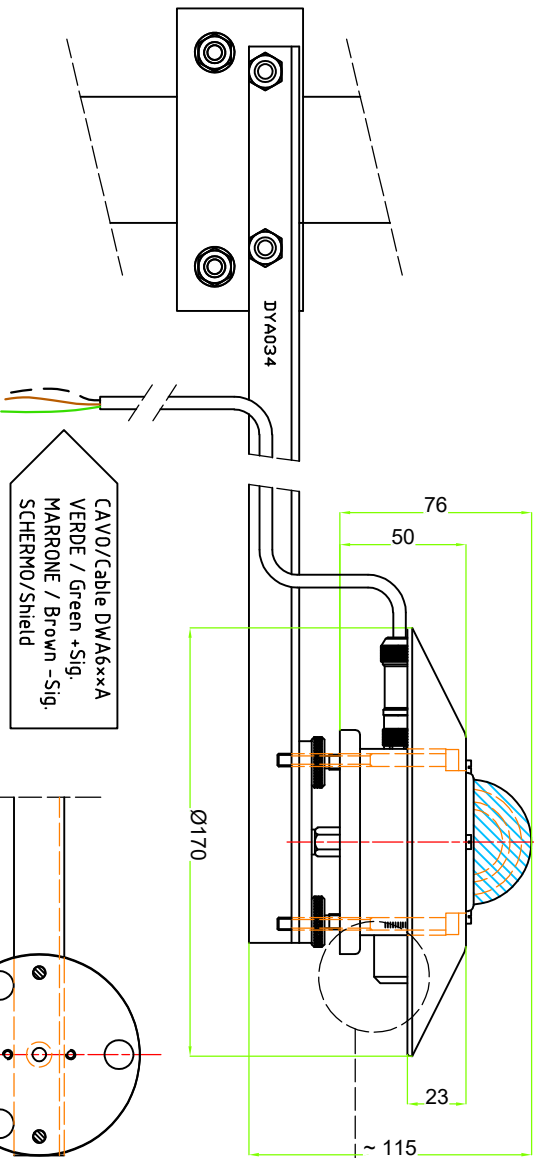


ESR154

COLLEGAMENTO AL DATA LOGGER M-LOG.
UTILIZZARE SOLO GLI INGRESSI A1, A2, A3 O
A4 / Connection to the M-Log data logger.
use only the A1, A2, A3 OR A4 inputs

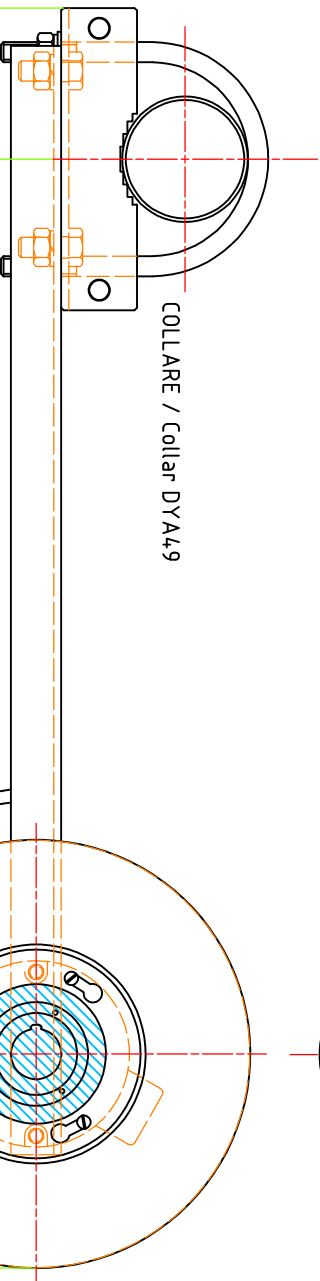


ESR154:
DP A154, CON CAVO CON CONNETTORE Mini-DIN /
DP A154, with cable Mini-DIN connector
Cod.: DW4602A



DP A154


SCHEMA GENERICO DI CONNESSIONE ELETTRICA A
DATA LOGGER E/R/M-Log / Generic electrical
connection to E/R/M-Log data logger
MORSETTIERA / Terminal board
Vedi manuale utente Data logger / See Data
logger user's manual



Indice di revisione	Data	Modifica effettuata	Indice di revisione	Data	Modifica effettuata
a	19/04/21	Agg cartiglio e layout disegno	f	---	---
b	---	---	g	---	---
c	---	---	h	---	---

DATA	REDAITTO:	CONTROLLATO:	VERIFICATO:	APPROVATO:
ORIGINALE	28/01/13	28/01/13	28/01/13	28/01/13
A4	UT	R&S	RA	RT

NOTE	UNITA' DI MISURA	PRECISIONE
Questo disegno contiene informazioni confidenziali, esclusivamente riservate ai suoi destinatari / Non stampare se non necessario / This communication contains confidential information intended only for its addressee. Please don't print it if not necessary.	mm	±0.1
	mm	±0.15
	mm	±0.25
	mm	±0.35



Descrizione:
RADIOMETRO GLOBALE A TERMOPILA /
THERMOPILE GLOBAL PYRANOMETER

Materiali: ---

FATTORE DI SCALA