

X-Panel (BSZ411)

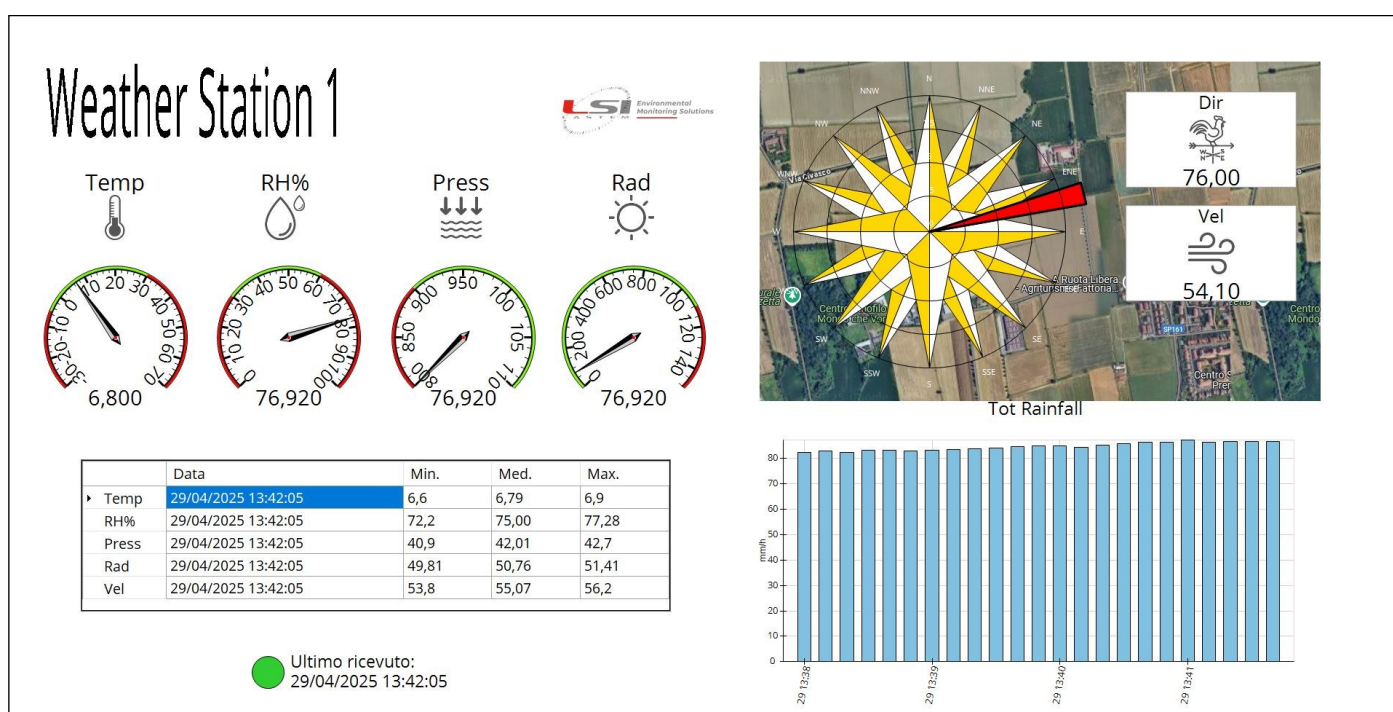
X-Panel is a control panel that displays the instantaneous values from the M/R/E-Log and Alpha-Log data loggers in real time and dynamically.

The software receives data from **E-Log connected via cable or through the CommNET program**. Using the latter program allows you to use multiple independent X-Panel sessions on multiple computers on the same network.

For Alpha-Log, X-Panel takes the data from an MQTT broker server where the data logger has sent the data. With X-Panel, the configuration of each page can be completely customized according to the data loggers and sensors to be viewed.

- ▶ Real-time information from data logger on dynamic dashboard
- ▶ Fully programmable
- ▶ Multi-parameter and multi-station dashboard
- ▶ Data input directly from data logger or from CommNET program or from MQTT broker server
- ▶ Availability of templates pre-configured for easy initialisation

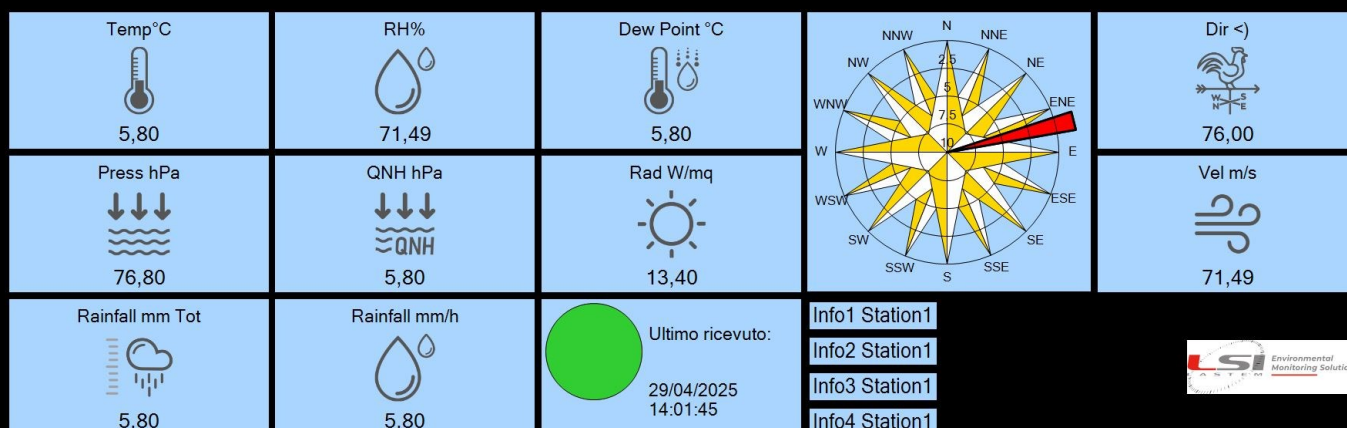
Main features



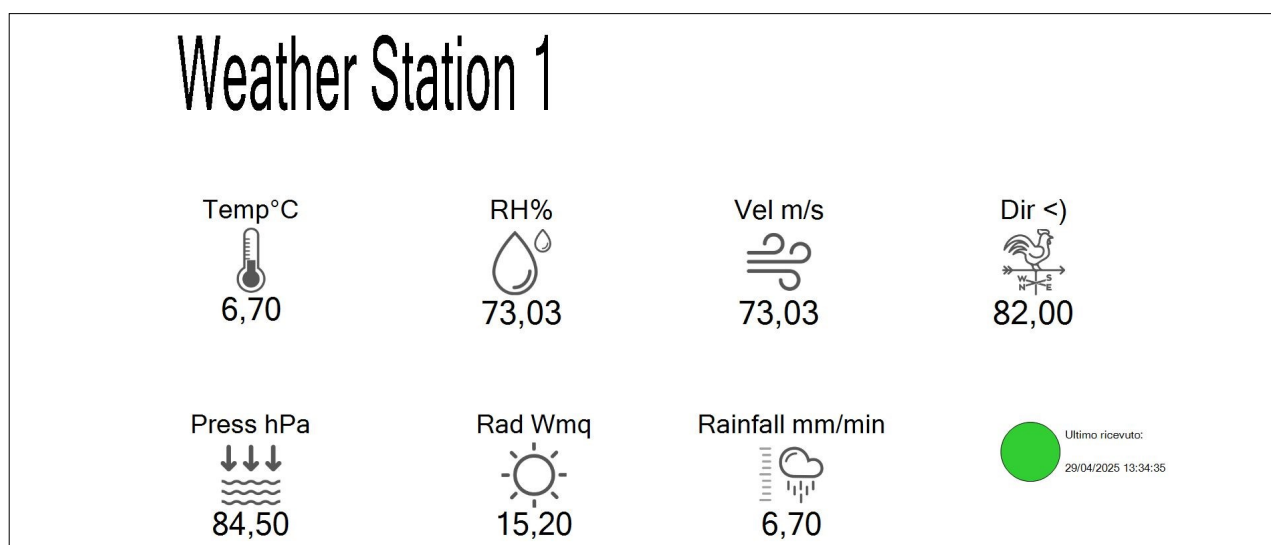
▶ Example of a control panel, in which the following dynamic objects are positioned: Icons of quantities, graphs, compass rose, tables with statistical values, communication status. The compass rose is largely configurable in the number of sectors, alarm setting and background image

- Setup of the data received directly from a data logger connected via RS232-RS485-USB-Ethernet, (using R/M/E-Log) or through CommNET, which is set up on a PC server; in this case, it is possible to view data coming from more data loggers, even remote
- Setup of data reception from an MQTT broker (Alpha-Log only). The data logger sends data to the broker, where X-Panel extracts instant values. This enables fast remote connectivity, with updates up to every second when Alpha-Log is online via Wireless Router, WiFi, or Ethernet.
- Configuration of "dynamic elements" (digital and analogue indicators, icons) according to the number of measurements to be displayed: position, contents of the dynamic elements for each parameter, as dynamic wind rose, charts with real-time or statistical values
- Configuration of visual and acoustic alarms (file wave) with configured thresholds
- Configuration of the wind rose. It is possible to add a background topographic map, which is useful to understand the wind direction and intensity

Weather Station 1



► Titles and images can be added on the control panel, it is also possible to configure the navigation through the various pages: manually selectable through labels or with automatic scrolling



MQTT broker-server rental

LSI LASTEM allows its customers to activate an MQTT service on the broker-server.
The customer who does not have their own service for the transit of data from monitoring stations through the MQTT broker-server, may request the sales / distributor to activate it.
The service is available in the form of an annual subscription.

SWCLA0009: FTP/MQTT service activation

SWCLA0220: 12 Months License MQTT service, n.1 Data Logger

(see **MW9006-ENG-FTP-MQTT services**)

LSI LASTEM Srl
Via Ex SP. 161 Dosso, 9
20090 Settala (MI)
Italy

Tel. +39 02 954141
Fax +39 02 95770594
Email info@lsi-lastem.com
www.lsi-lastem.com

